

City of Austin
Austin Transportation Department
11/1/2011

Old Enfield

Original Conditions

	Count Dates Begin End		Weekday Traffic Volumes						Weekend Traffic Volumes				
			ADT		AM Peak (Time)		PM Peak (Time)		Saturday		Sunday		
			NB/EB	SB/WB	NB/EB	SB/WB	NB/EB	SB/WB	NB/EB	SB/WB	NB/EB	SB/WB	
1	Hartford north of Enfield	4/4/11	4/10/11	920	560	30	46	250	54	500	546	372	422
2	Wethersfield north of Enfield	4/4/11	4/10/11	253	81	9	4	23	7	203	79	187	71
3	Newfield north of Enfield	4/4/11	4/10/11	964	168	13	7	189	15	480	104	389	59
4	Hartford south of Windsor	4/4/11	4/10/11	2079	677	62	41	388	84	1018	599	659	420
5	Woodlawn south of Windsor	4/4/11	4/10/11	168	90	5	3	14	20	183	46	95	41
6	Woodlawn north of Enfield	4/4/11	4/10/11	223	188	6	8	19	14	233	229	166	182
7	Pease north of Enfield	4/4/11	4/10/11	319	210	14	16	22	26	364	190	231	139
8	Windsor south of Windsor	4/4/11	4/10/11	971	804	37	63	210	79	730	755	404	439
9	West Lynn north of Enfield	4/4/11	4/10/11	759	815	16	68	97	81	548	591	446	482
10	Murray north of Enfield	4/4/11	4/10/11	58	90	0	6	6	10	62	56	32	57
11	Lorraine north of Enfield	4/4/11	4/10/11	104	104	3	5	10	9	114	89	73	79
12	Windsor north of Enfield	4/4/11	4/10/11	965	168	13	7	189	15	480	104	389	59
13	Parkway north of Enfield	Date	Date	197	168	6	7	16	12	203	201	148	161

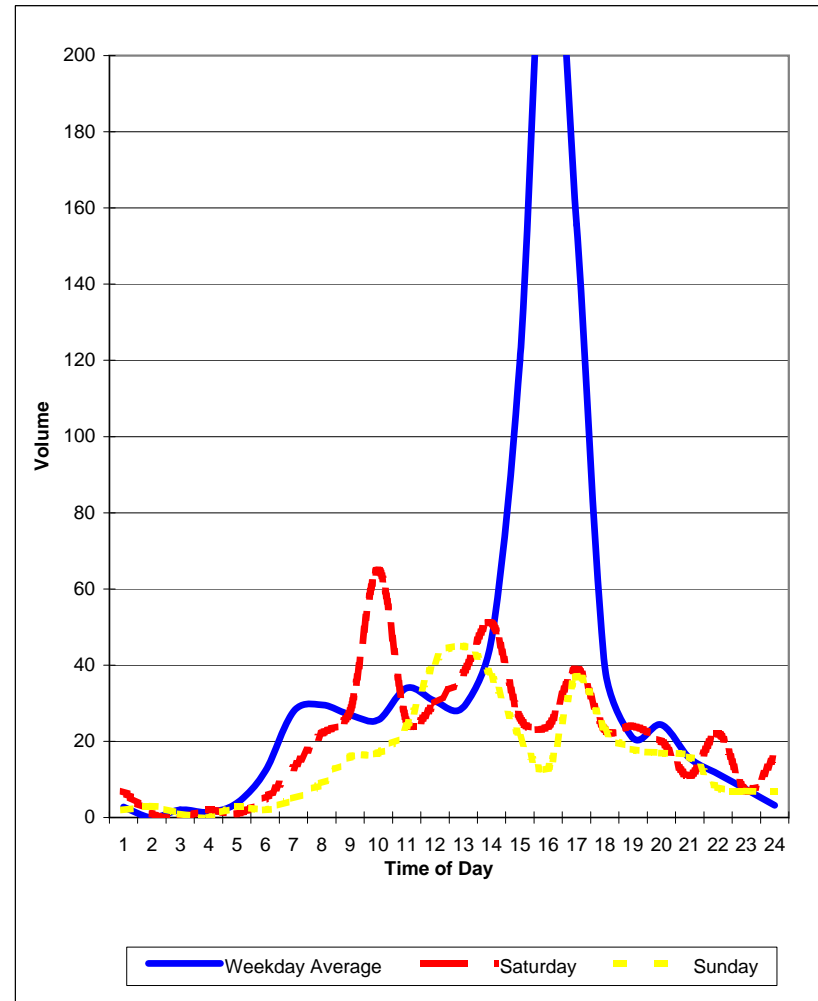
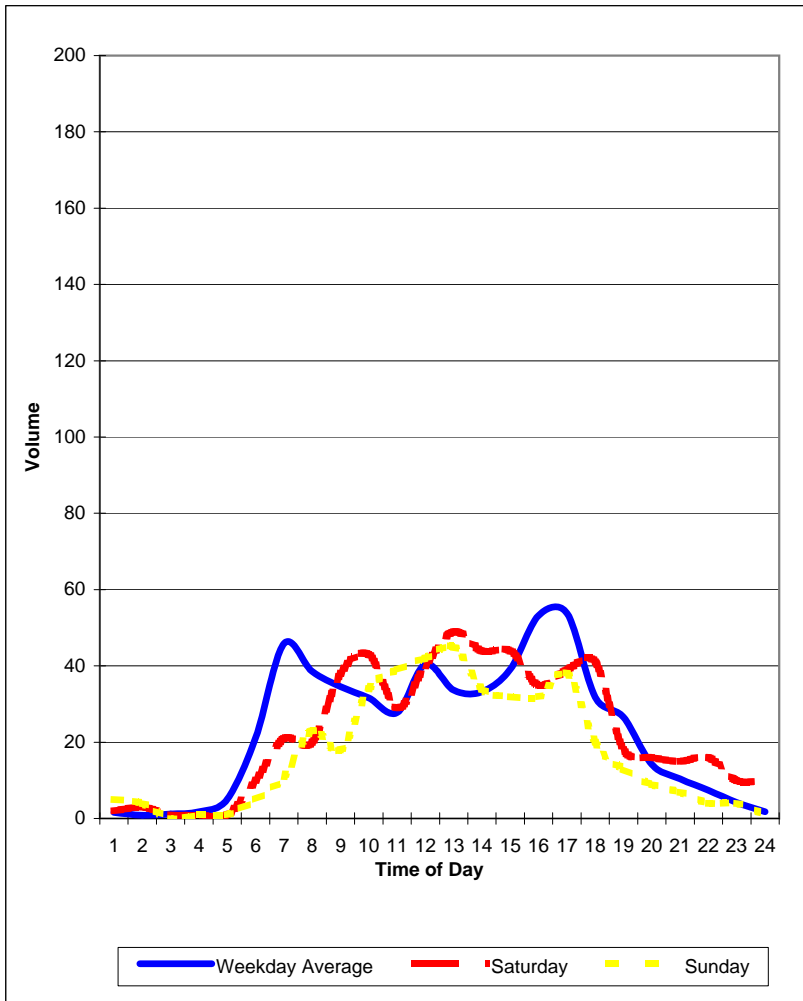
Original Conditions

**Old Enfield
 Hourly Traffic Volumes**

**Location 1
 Hartford north of Enfield**

South Bound

North Bound



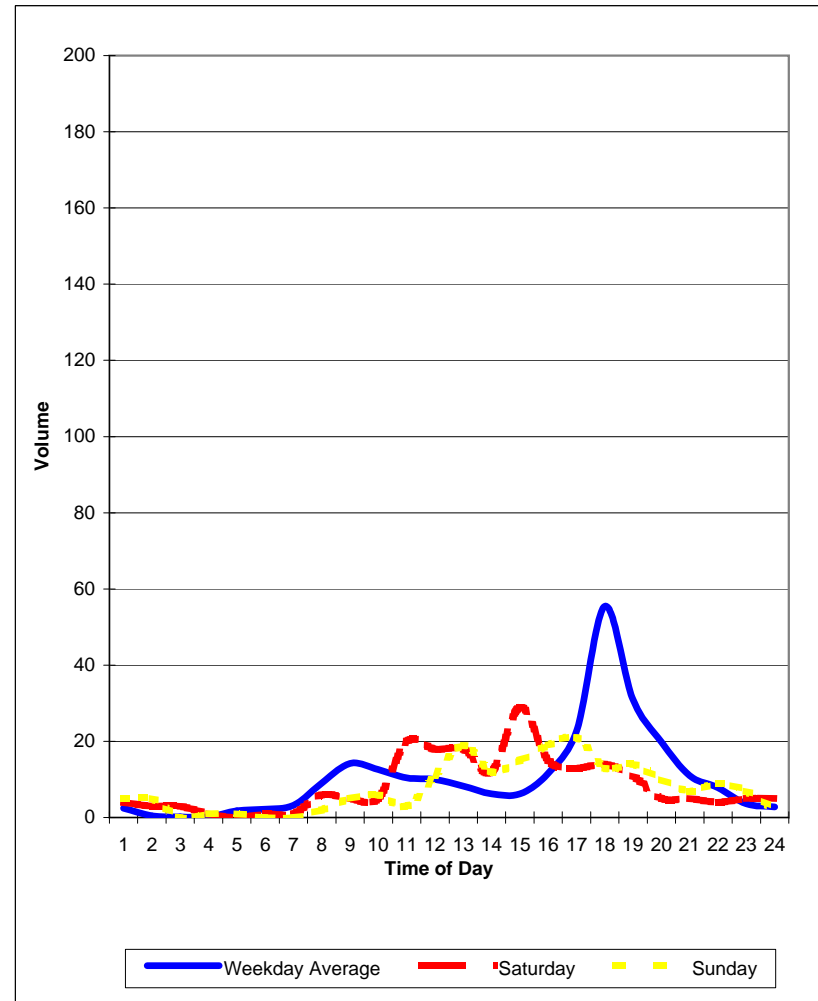
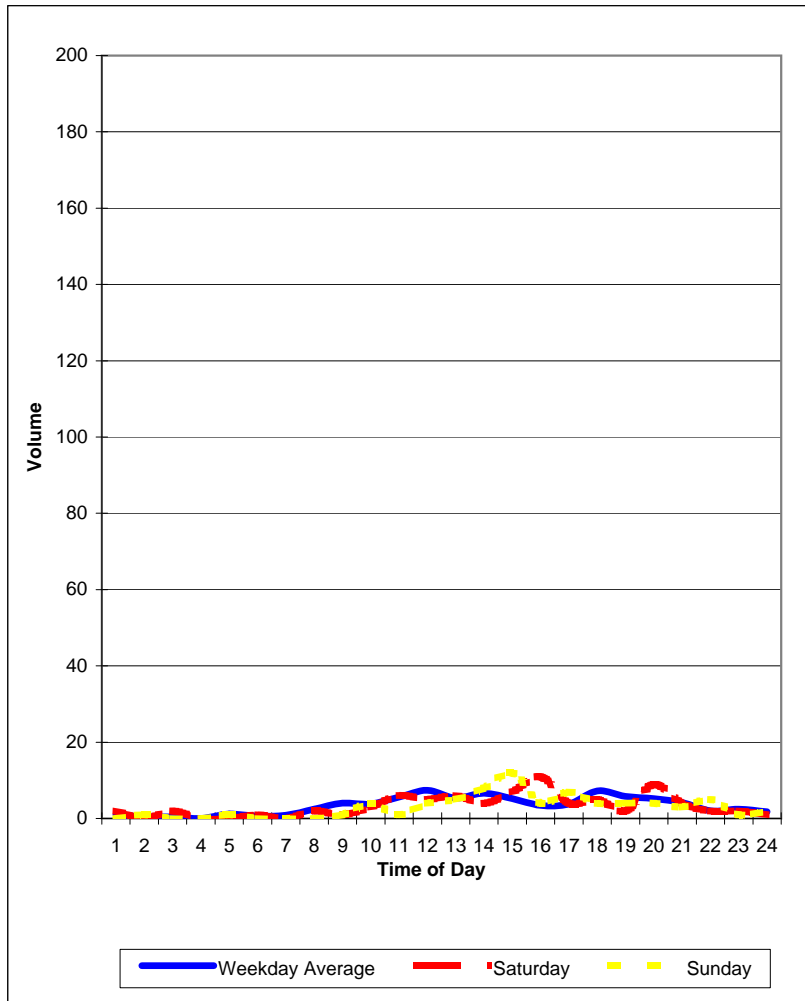
Original Conditions

**Old Enfield
Hourly Traffic Volumes**

**Location 2
Wethersfield north of Enfield**

South Bound

North Bound



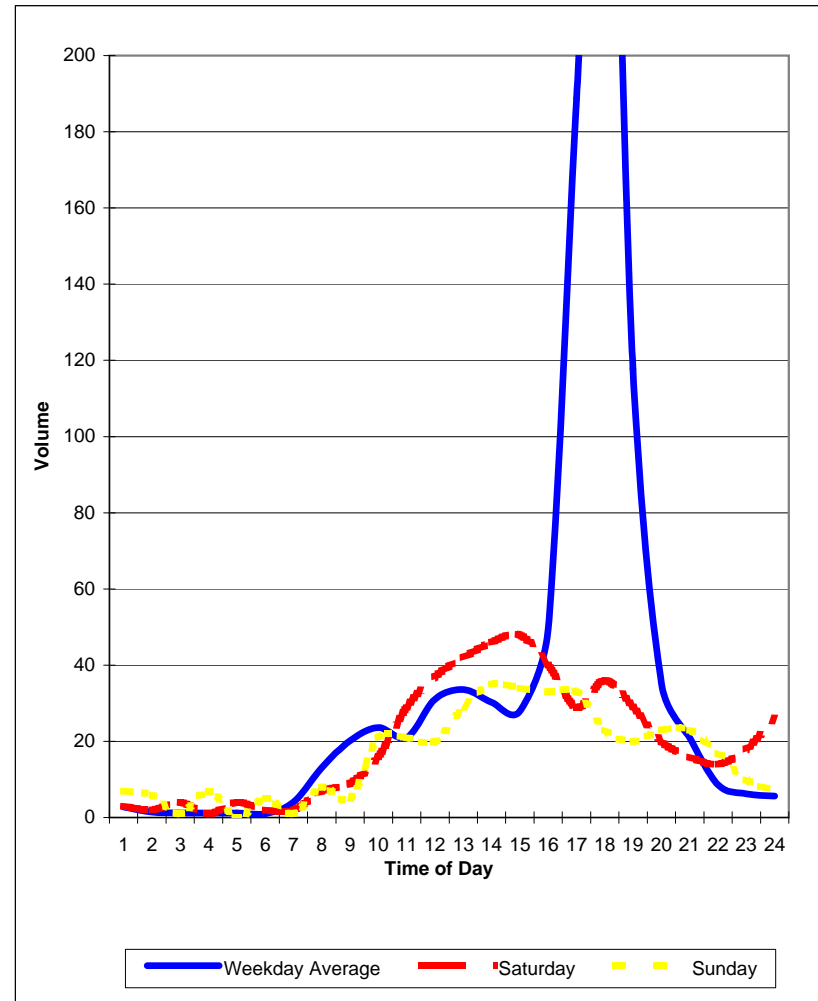
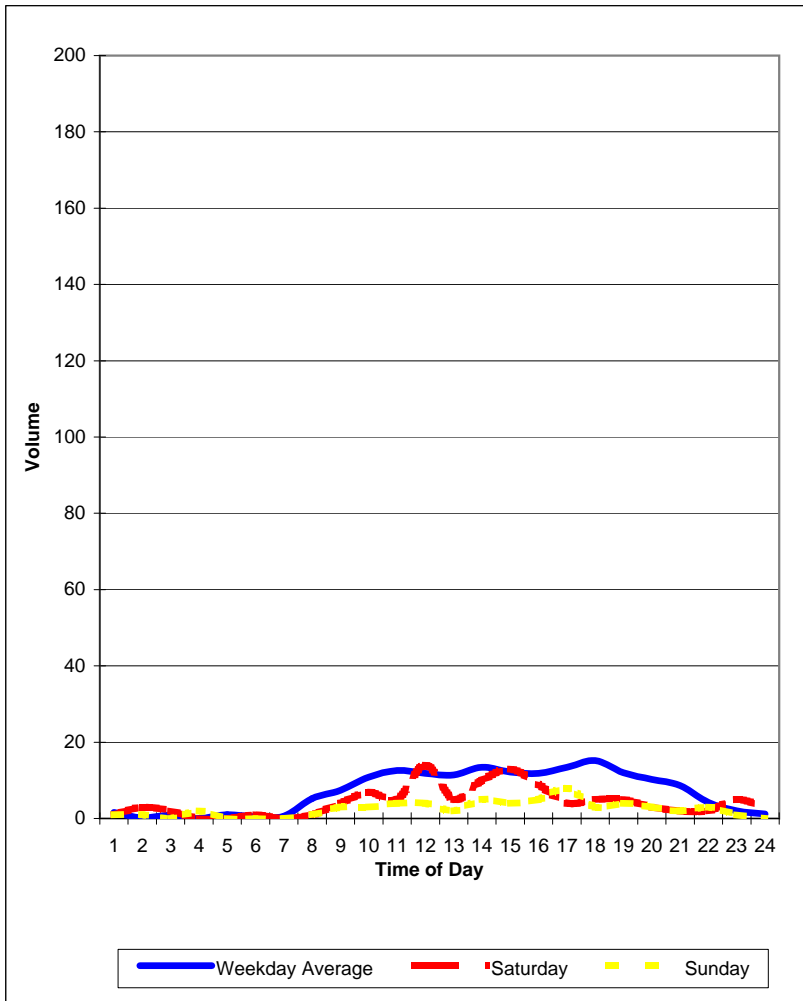
Original Conditions

**Old Enfield
Hourly Traffic Volumes**

**Location 3
Newfield north of Enfield**

South Bound

North Bound



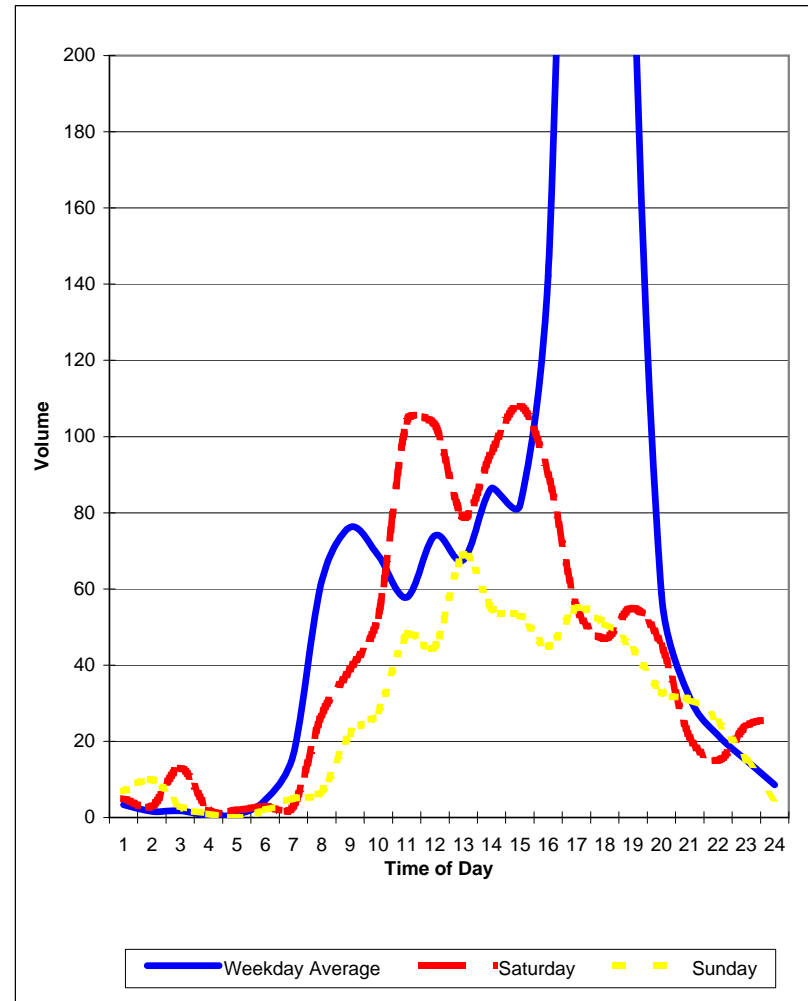
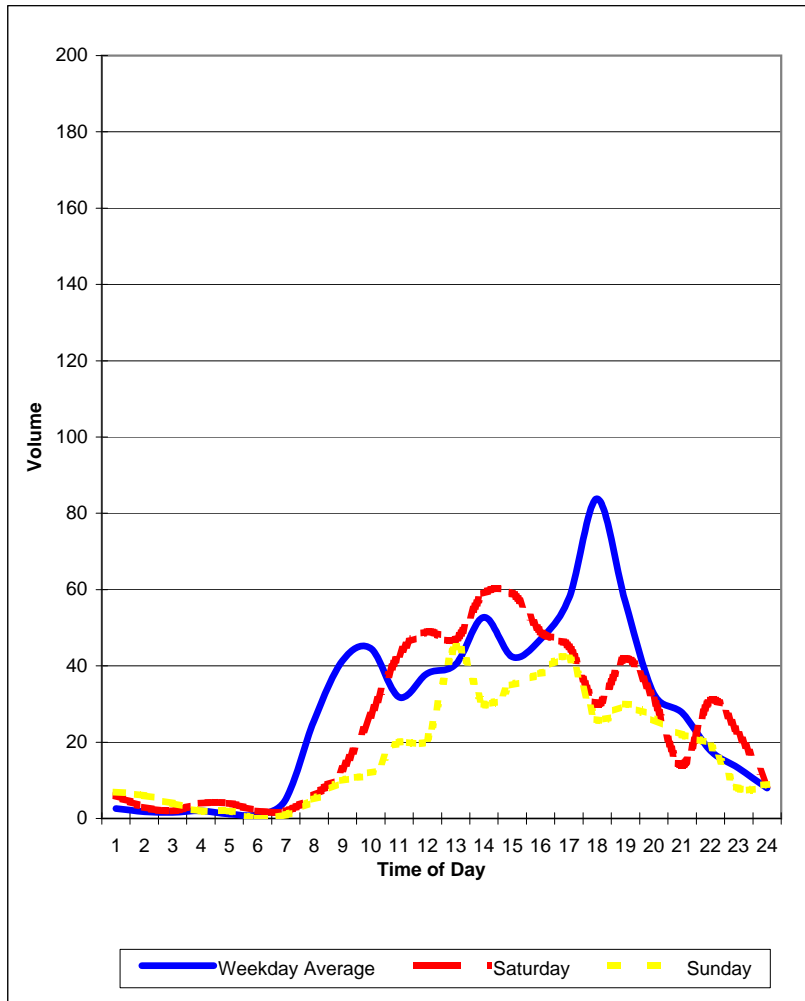
Original Conditions

Old Enfield
Hourly Traffic Volumes

Location 4
Hartford south of Windsor

South Bound

North Bound



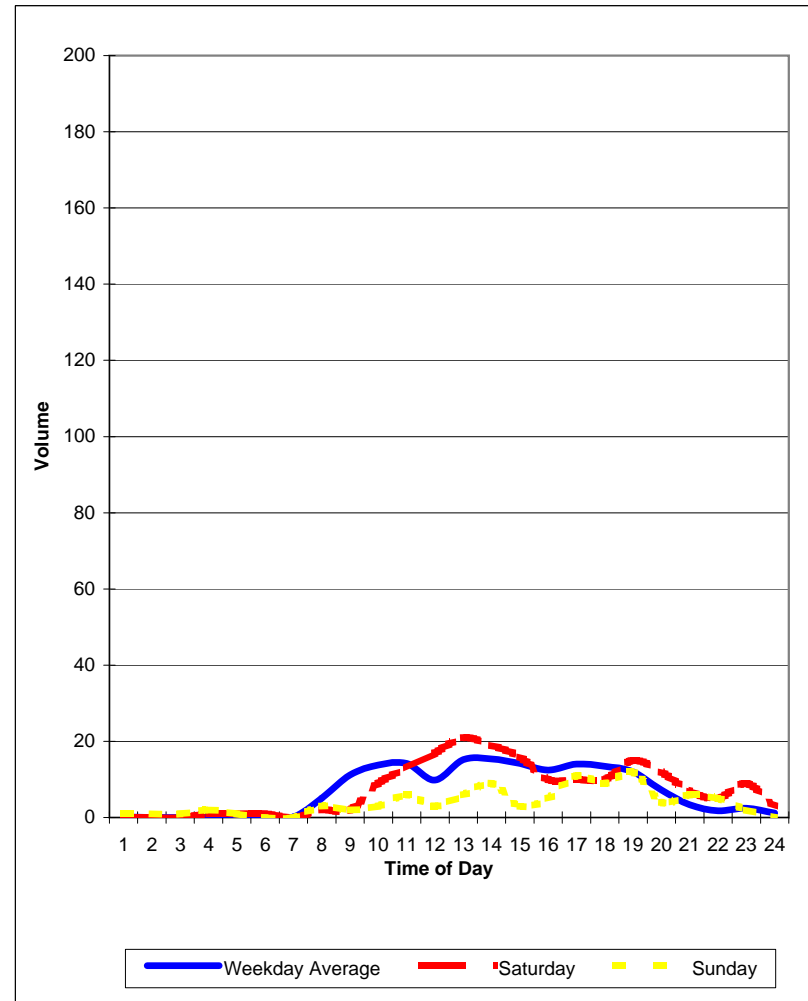
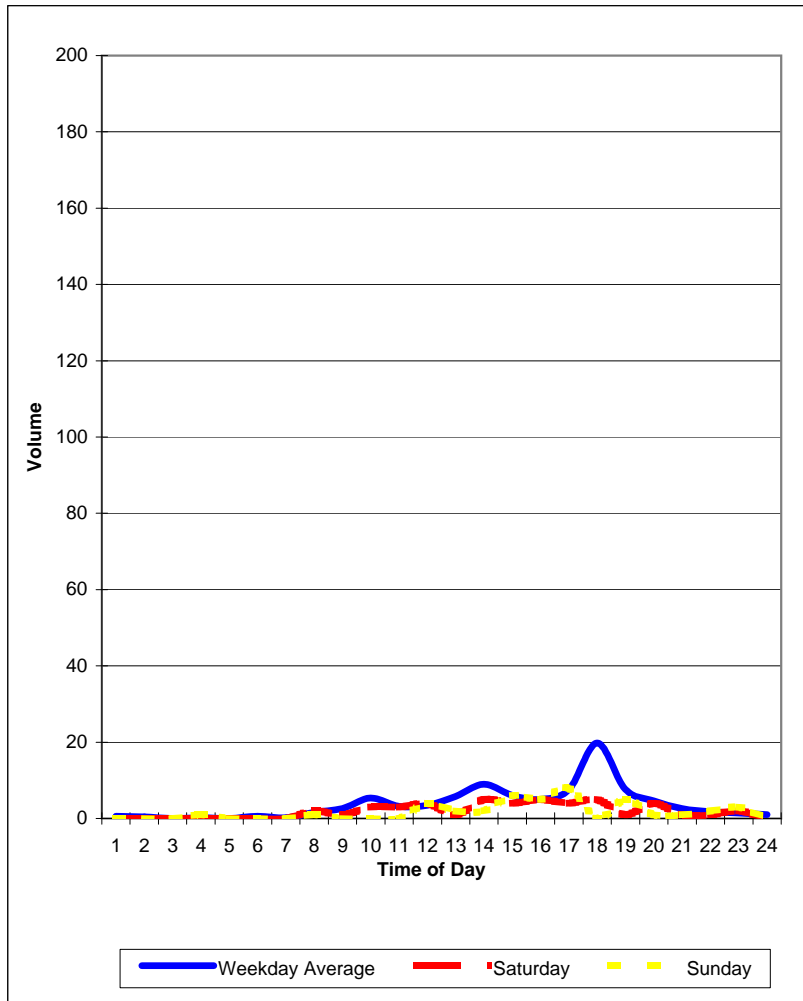
Original Conditions

Old Enfield
Hourly Traffic Volumes

Location 5
Woodlawn south of Windsor

South Bound

North Bound



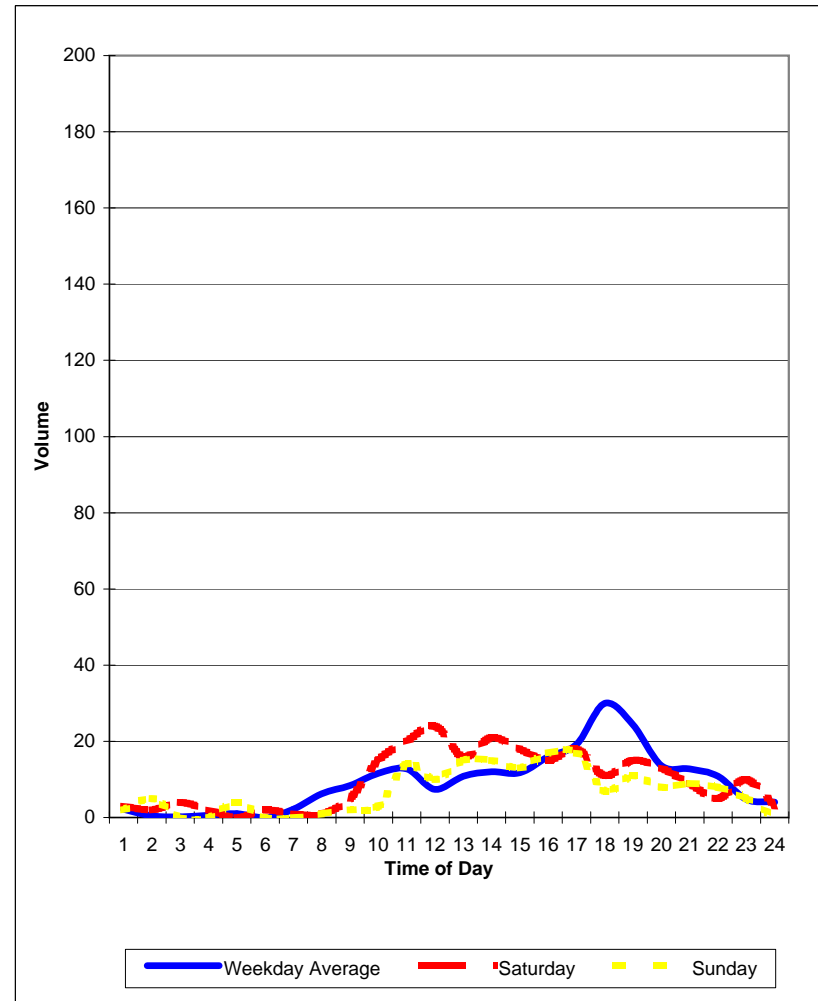
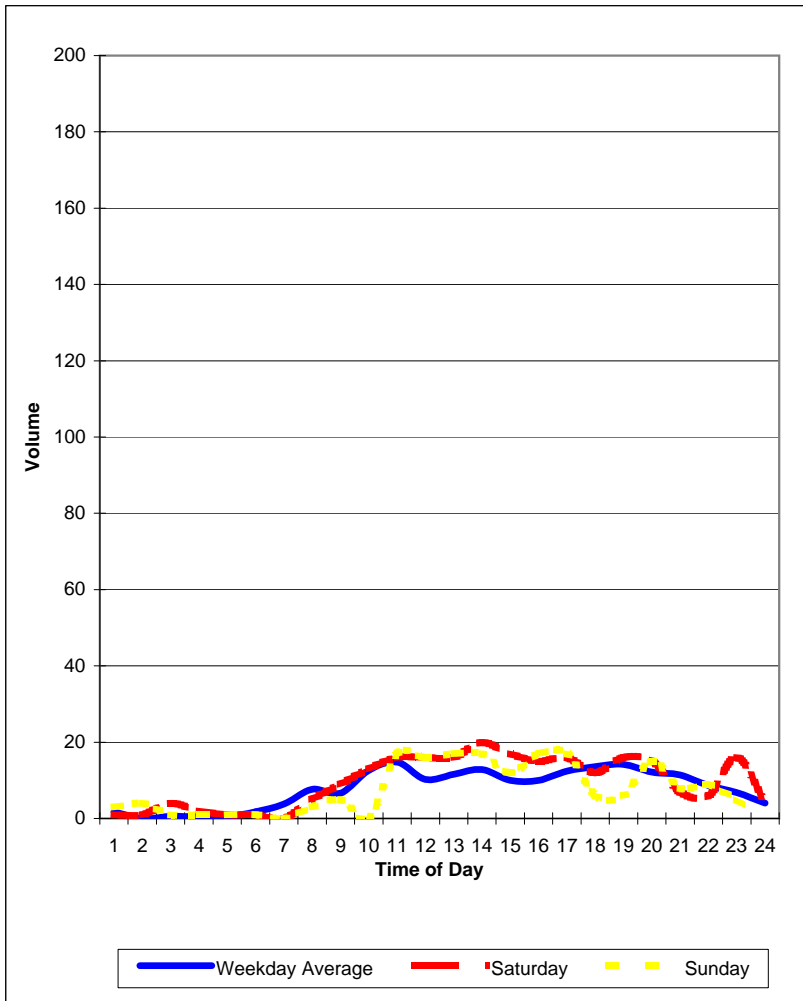
Original Conditions

**Old Enfield
Hourly Traffic Volumes**

**Location 6
Woodlawn north of Enfield**

South Bound

North Bound



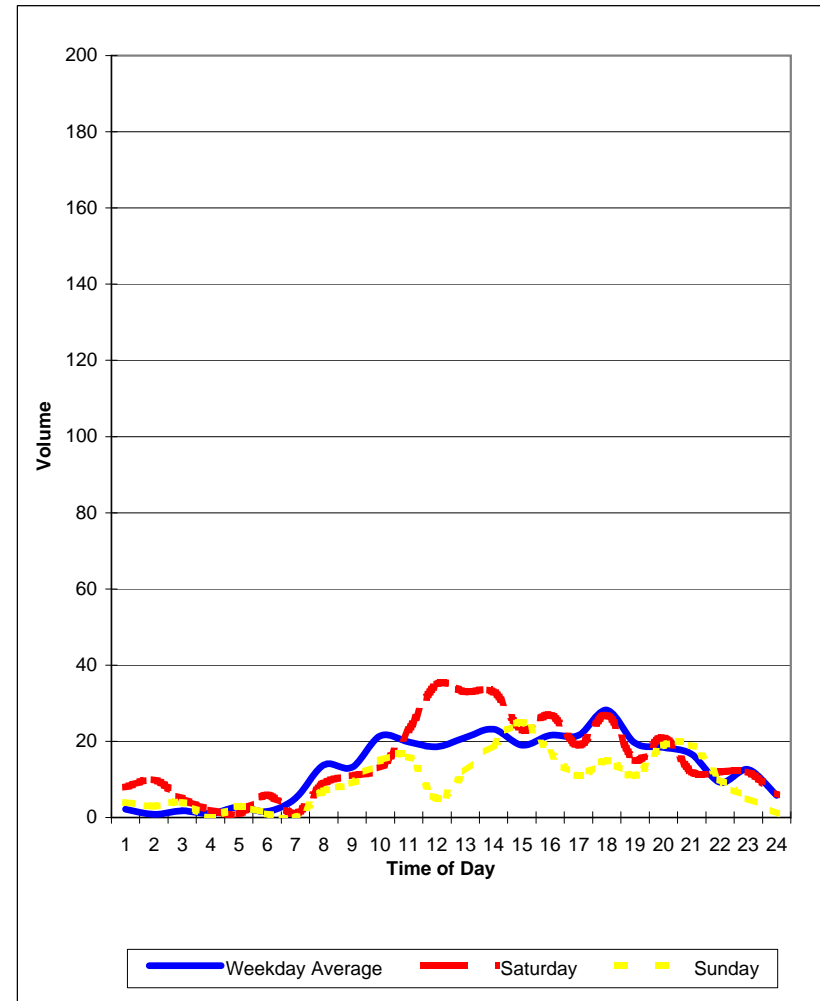
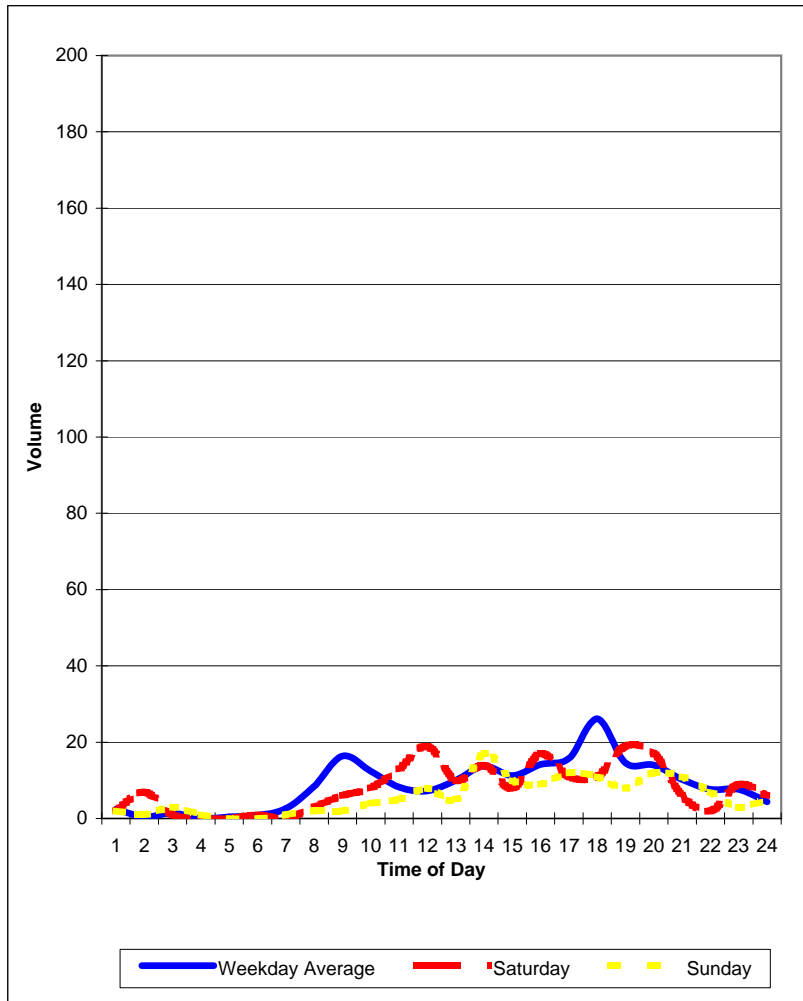
Original Conditions

**Old Enfield
Hourly Traffic Volumes**

**Location 7
Pease north of Enfield**

South Bound

North Bound



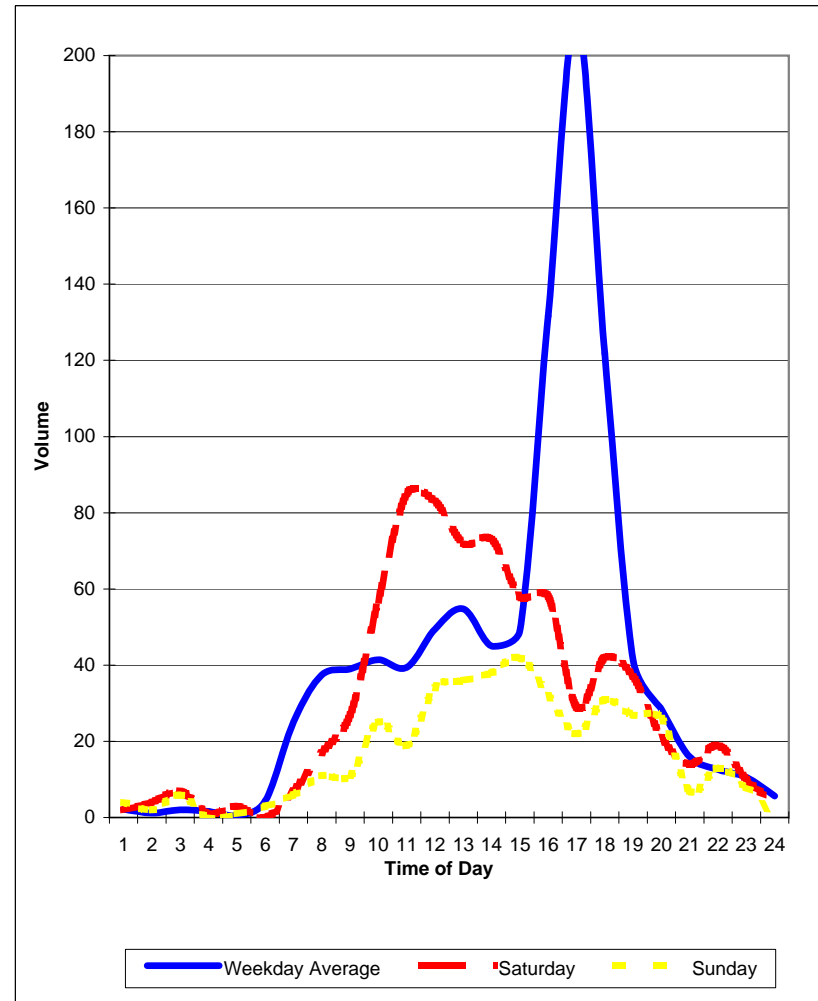
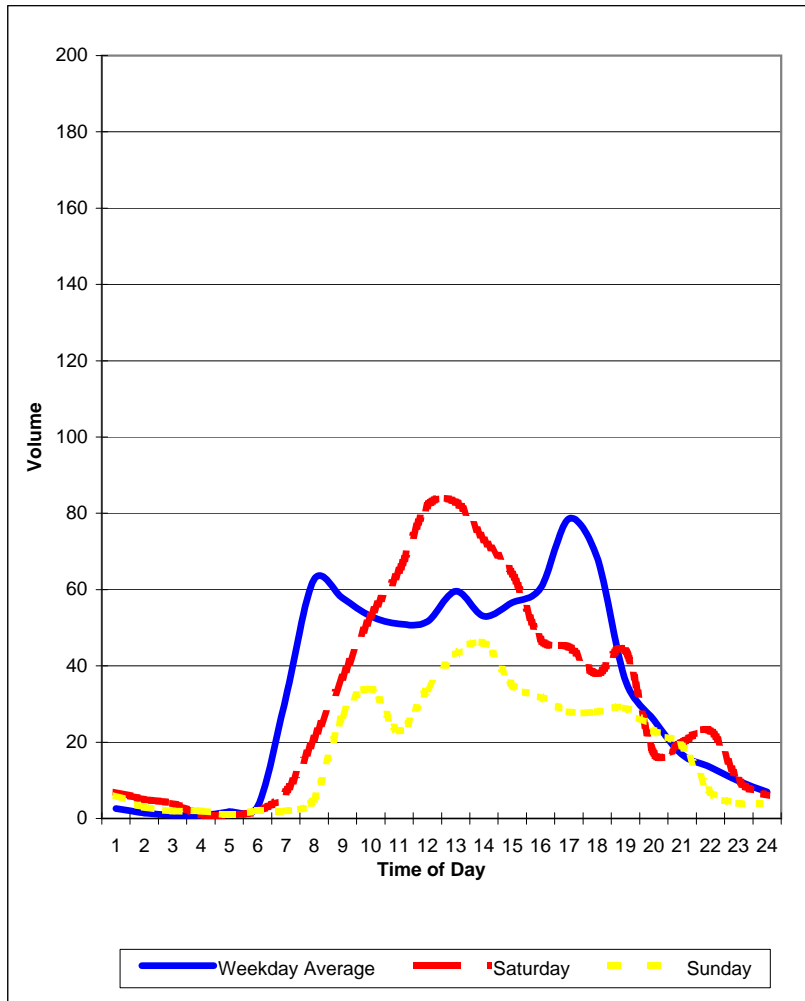
Original Conditions

Old Enfield
Hourly Traffic Volumes

Location 8
Windsor south of Windsor

South Bound

North Bound



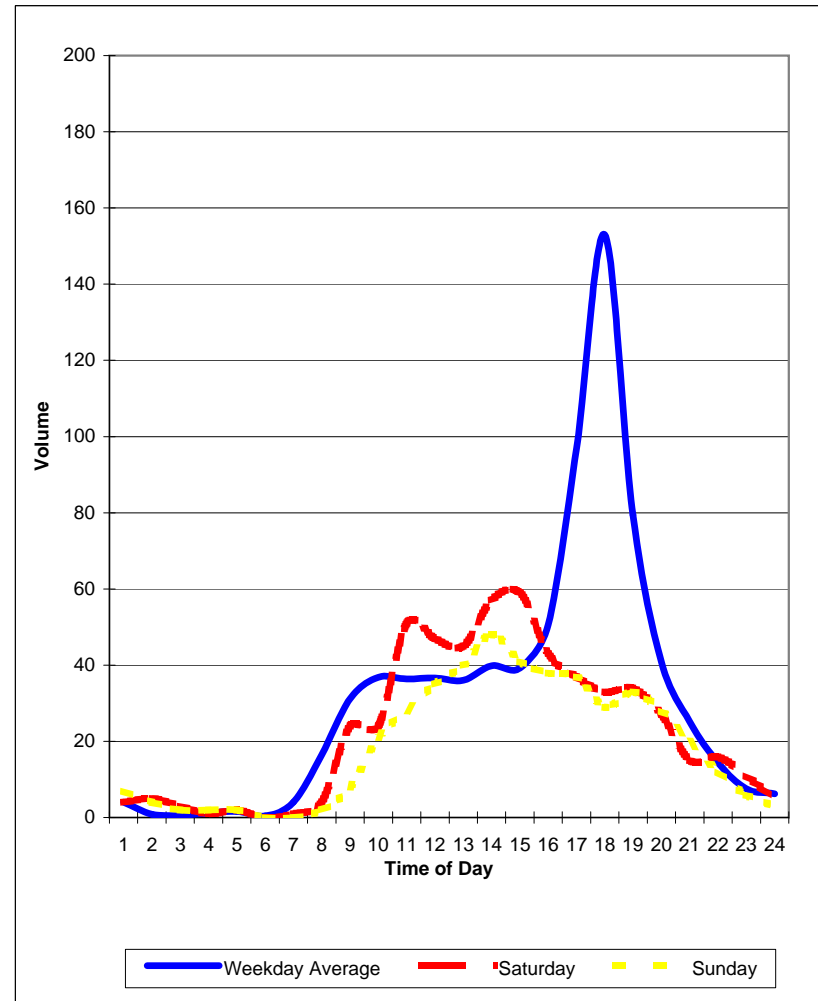
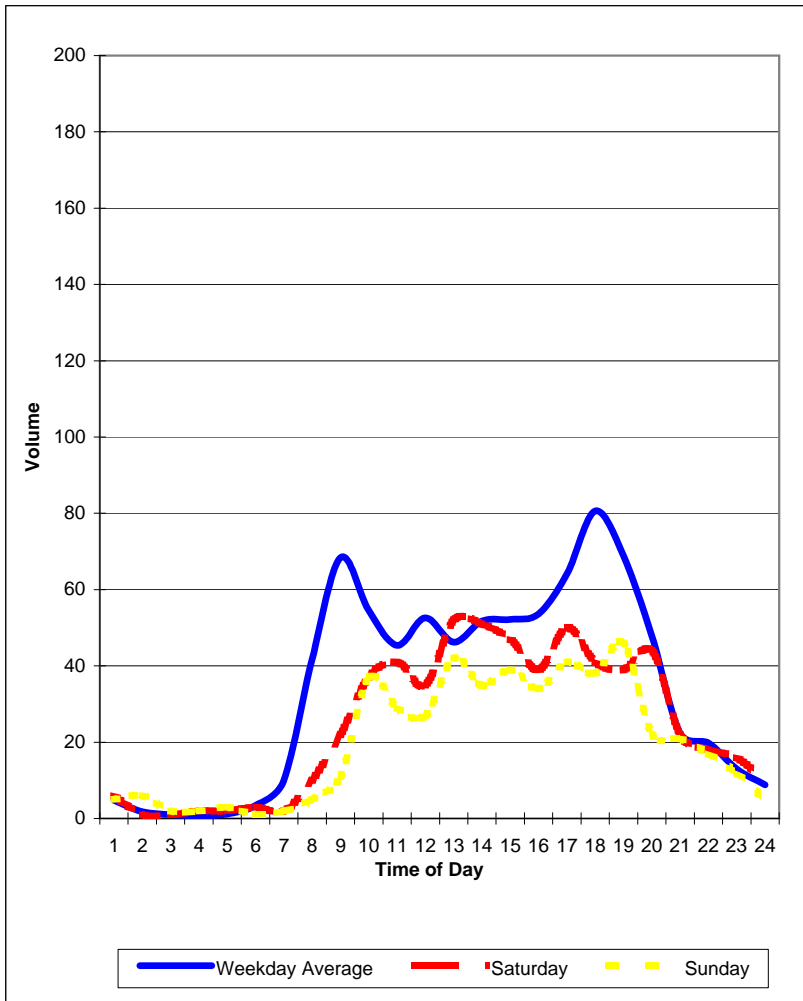
Original Conditions

Old Enfield
Hourly Traffic Volumes

Location 9
West Lynn north of Enfield

South Bound

North Bound



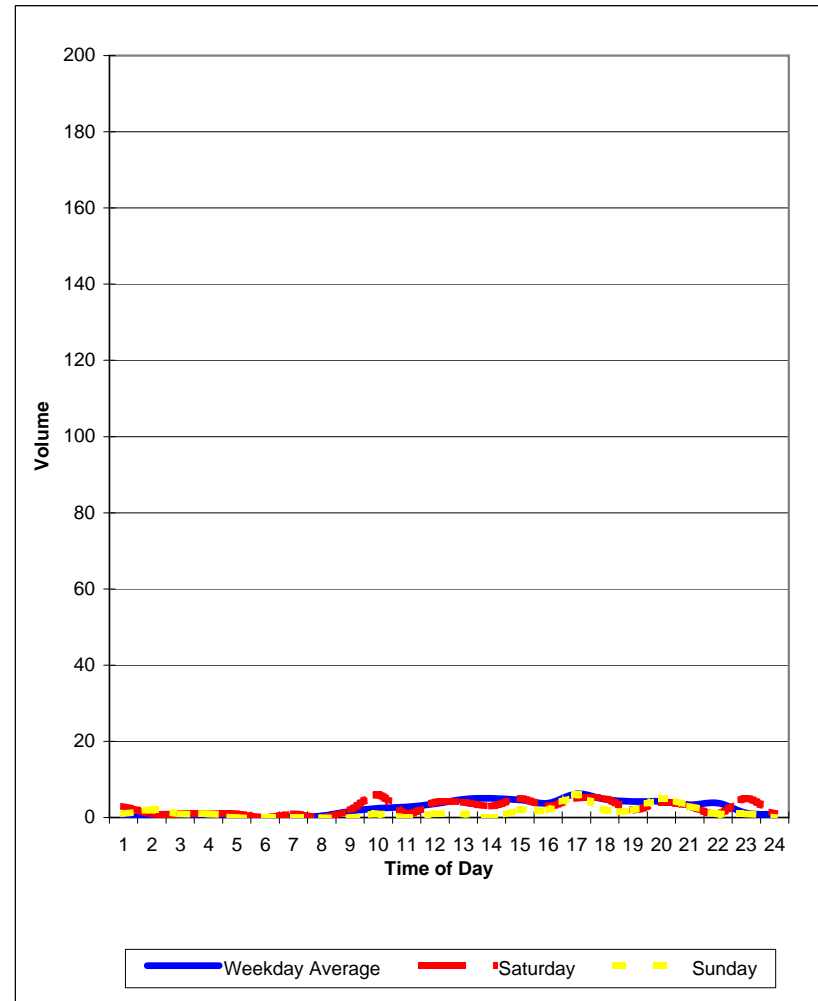
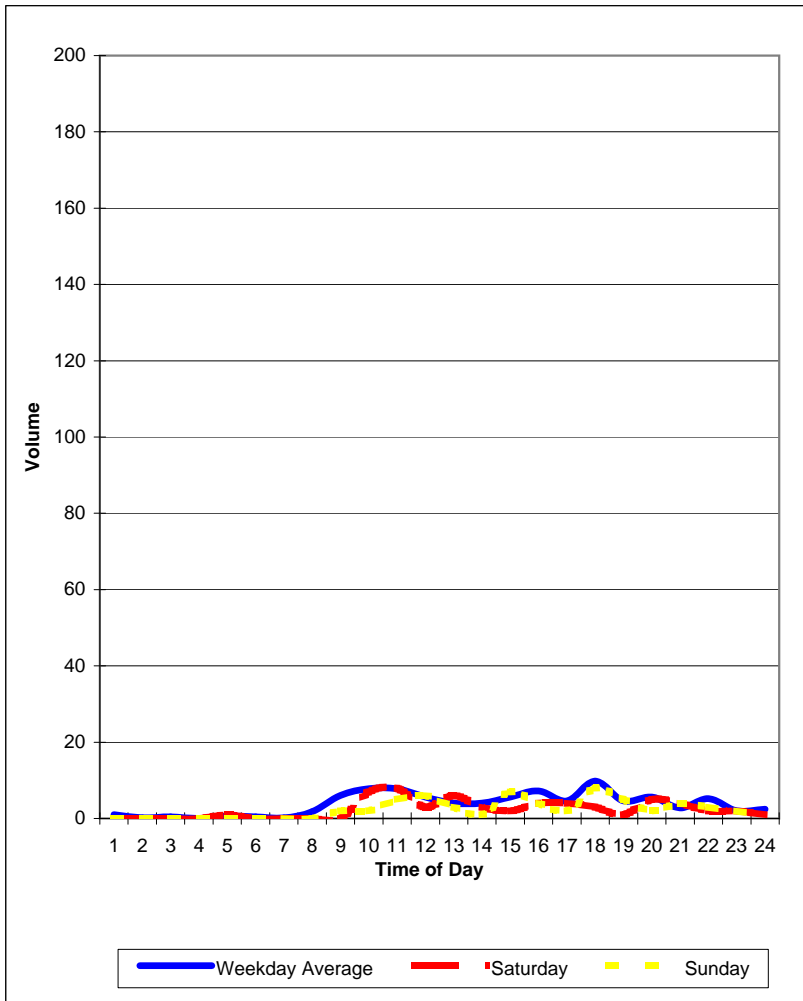
Original Conditions

Old Enfield
Hourly Traffic Volumes

Location 10
Murray north of Enfield

South Bound

North Bound



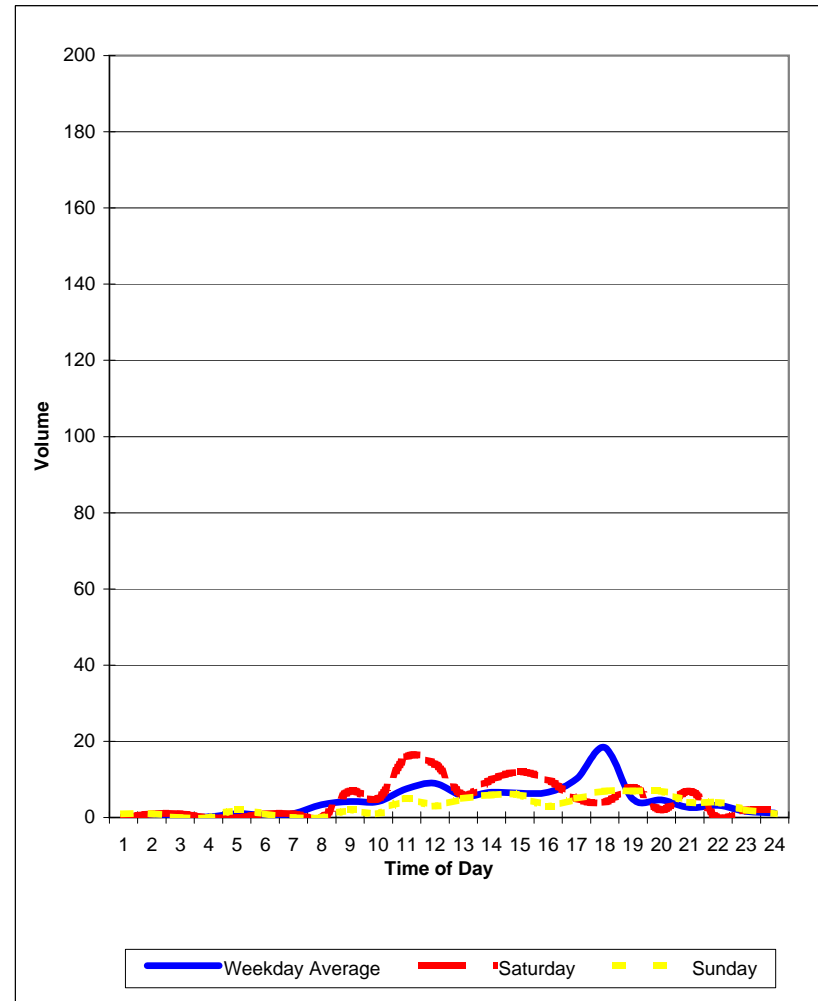
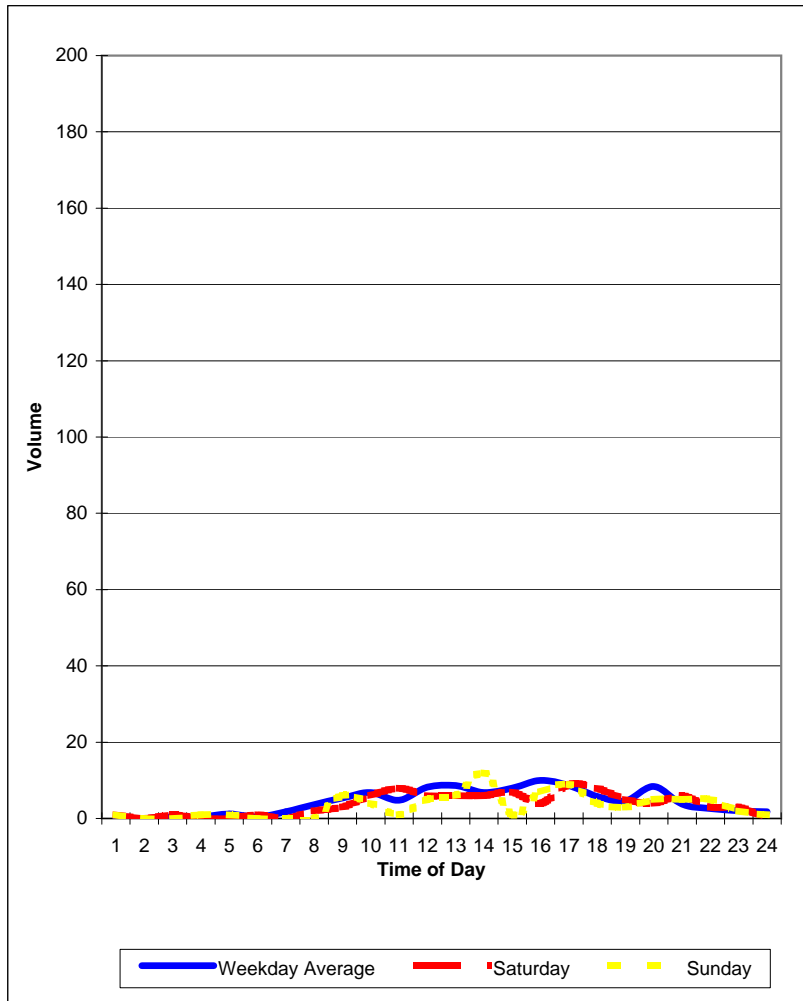
Original Conditions

Old Enfield
Hourly Traffic Volumes

Location 11
Lorraine north of Enfield

South Bound

North Bound



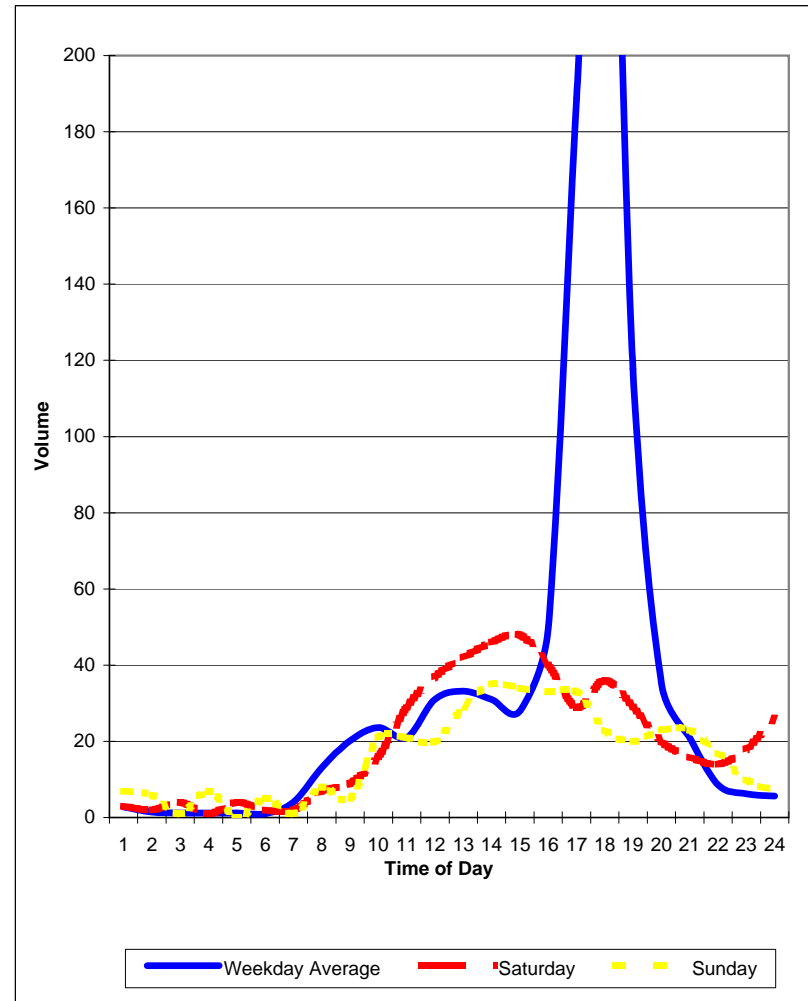
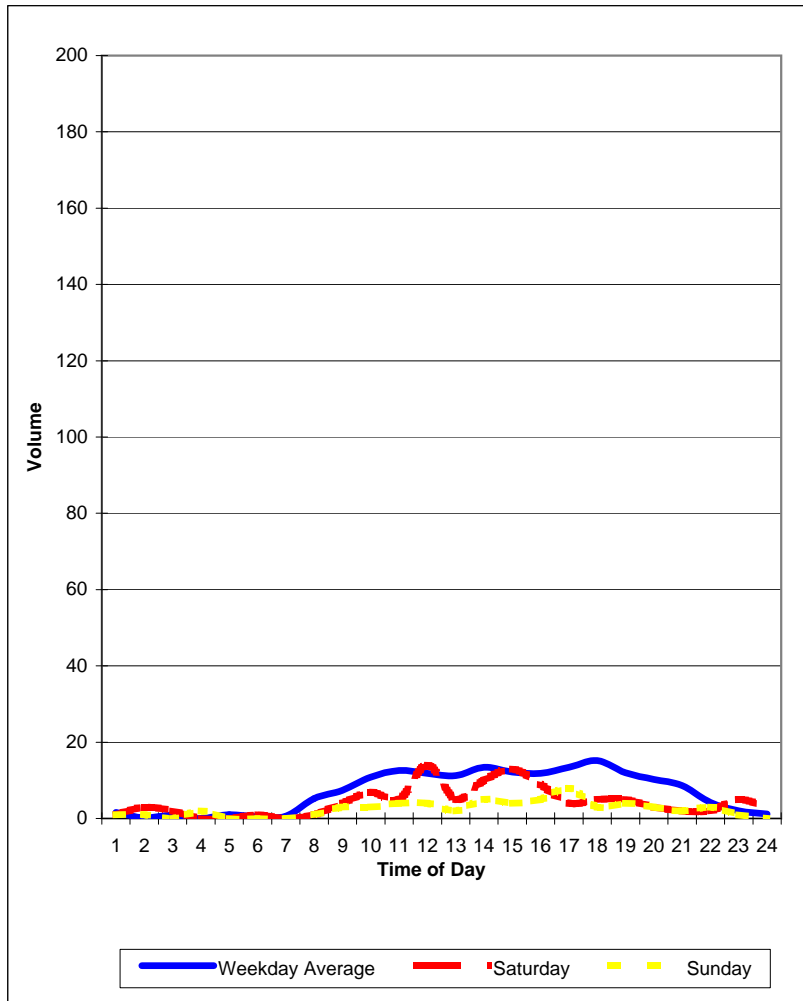
Original Conditions

Old Enfield
Hourly Traffic Volumes

Location 12
Windsor north of Enfield

South Bound

North Bound



Original Conditions

Old Enfield
Hourly Traffic Volumes

Location 13
Parkway north of Enfield

South Bound

North Bound

